

JW-HF132N Series (9BB)

Jolywood N-type High Efficiency Monocrystalline Silicon Light and Flexible Module



- JW-HF132N-320
- JW-HF132N-325
- JW-HF132N-330
- JW-HF132N-335
- JW-HF132N-340



Light

The module has no glass on the surface, but it has a special frame. Such module with the same contour realizes a weight reduction of up to more than 70%.



Bendable

The industry-leading composite materials and unique packaging technology provide this light flexible module with some bendability, which allows it to perfectly fit the curved surface. The product is suitable for various application scenarios.



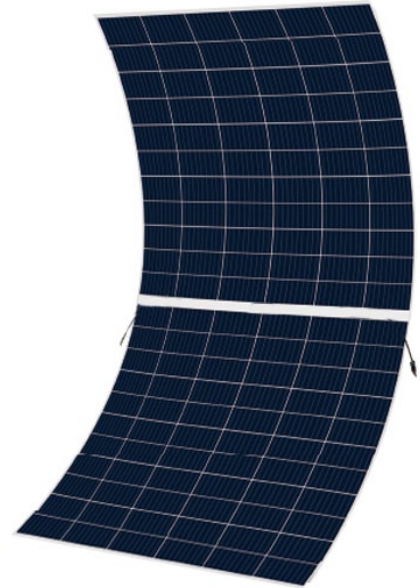
No Cracks

The front snow pressure test, back wind load certification test, PID test, various experimental and project empirical detections as well as the strict quality management and selected materials ensure the long-term reliability of the module.

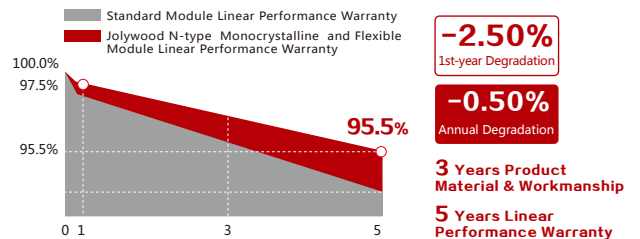
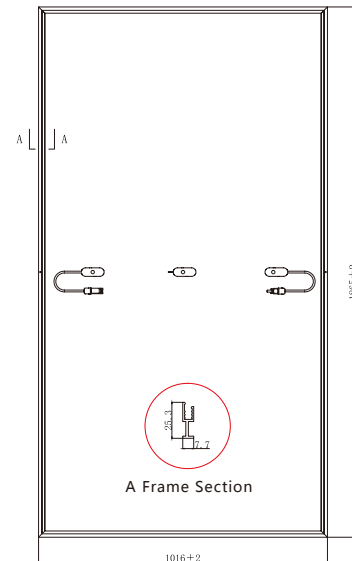


Easy Installati

The custom design (light system) together with the ease to handle and quick installation can significantly save on the installation costs.



ENGINEERING DRAWING (unit : mm)



JW-HF132N Series

Jolywood N-type High Efficiency Monocrystalline Silicon Light and Flexible Module

ELECTRICAL PROPERTIES | STC*

| Module Type | JW-HF132N-320 | JW-HF132N-325 | JW-HF132N-330 | JW-HF132N-335 | JW-HF132N-340 |
|-----------------------------------|---------------|---------------|---------------|---------------|---------------|
| Testing Condition | Front Side | Front Side | Front Side | Front Side | Front Side |
| Peak Power (Pmax) (W) | 320.0 | 325 | 330 | 335 | 340 |
| MPP Voltage (Vmp) (V) | 34.6 | 35.0 | 35.4 | 35.9 | 36.3 |
| MPP Current (Imp) (A) | 9.26 | 9.29 | 9.32 | 9.33 | 9.37 |
| Open Circuit Voltage (Voc) (V) | 42.6 | 43.1 | 43.6 | 44.2 | 44.7 |
| Short Circuit Current (Isc) (A) | 9.82 | 9.85 | 9.88 | 9.90 | 9.93 |
| Module Efficiency (%) | 16.89 | 17.15 | 17.42 | 17.68 | 17.94 |

*STC: Irradiance 1000 W/m², Cell Temperature 25°C, Air Mass AM1.5
The data above is for reference only and the actual data is in accordance with the practical testing

ELECTRICAL PROPERTIES | NOCT*

| Testing Condition | Front Side | Front Side | Front Side | Front Side | Front Side |
|-----------------------------------|------------|------------|------------|------------|------------|
| Peak Power (Pmax) (W) | 242 | 246 | 250 | 253 | 257 |
| MPP Voltage (Vmp) (V) | 32.4 | 32.8 | 33.2 | 33.7 | 34.1 |
| MPP Current (Imp) (A) | 7.47 | 7.49 | 7.52 | 7.52 | 7.55 |
| Open Circuit Voltage (Voc) (V) | 40.7 | 41.2 | 41.7 | 42.2 | 42.7 |
| Short Circuit Current (Isc) (A) | 7.92 | 7.94 | 7.97 | 7.98 | 8.01 |

*NOCT: Irradiance at 800 W/m², Ambient Temperature 20°C, Wind Speed 1 m/s

OPERATING PROPERTIES >

| | |
|-------------------------------|---------------|
| Operating Temperature (°C) | -40°C~+85°C |
| Maximum System Voltage (V) | 1000V (IEC) |
| Maximum Series Fuse Rating(A) | 20 |
| Power Tolerance | 0~+5W |

TEMPERATURE COEFFICIENT >

| | |
|-------------------------------------------|------------|
| Temperature Coefficient of Pmax* | -0.32%/°C |
| Temperature Coefficient of Voc | -0.26%/°C |
| Temperature Coefficient of Isc | +0.046%/°C |
| Nominal Operating Cell Temperature (NOCT) | 42±2°C |

*Temperature Coefficient of Pmax±0.03%/°C

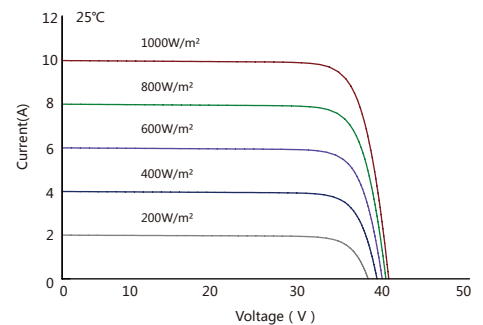
MECHANICAL PROPERTIES >

| | |
|-----------------|----------------------------|
| Cell Type | 158.75mm*79.375mm |
| Number of Cells | 132pcs(12*11) |
| Dimension | 1865mm*1016mm*7.7mm |
| Weight | 11.2Kg |
| Frame | Anodized Aluminium |
| Junction Box | IP67 (3 diodes) |
| Length of Cable | 4.0mm ² , 300mm |
| Connector | MC4 Compatible |

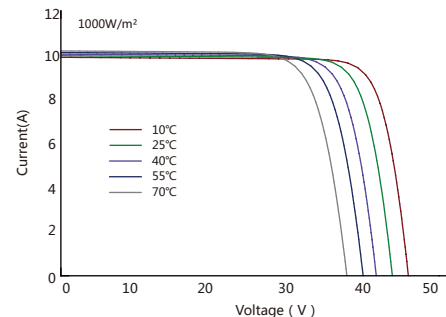
PARTNER SECTION >

NOTE :

Irradiance Dependence of Isc, Voc and Pmax >



Temperature Dependence of Isc, Voc and Pmax >



*The specification and key features described in this datasheet may deviate slightly and are not guaranteed. Due to ongoing innovation, R&D enhancement, Jolywood (Taizhou) Solar Technology Co., Ltd. reserves the right to make any adjustment to the information described herein at any time without notice. Please always obtain the most recent version of the datasheet which shall be duly incorporated into the binding contract made by the parties governing all transactions related to the purchase and sale of the products described herein.

